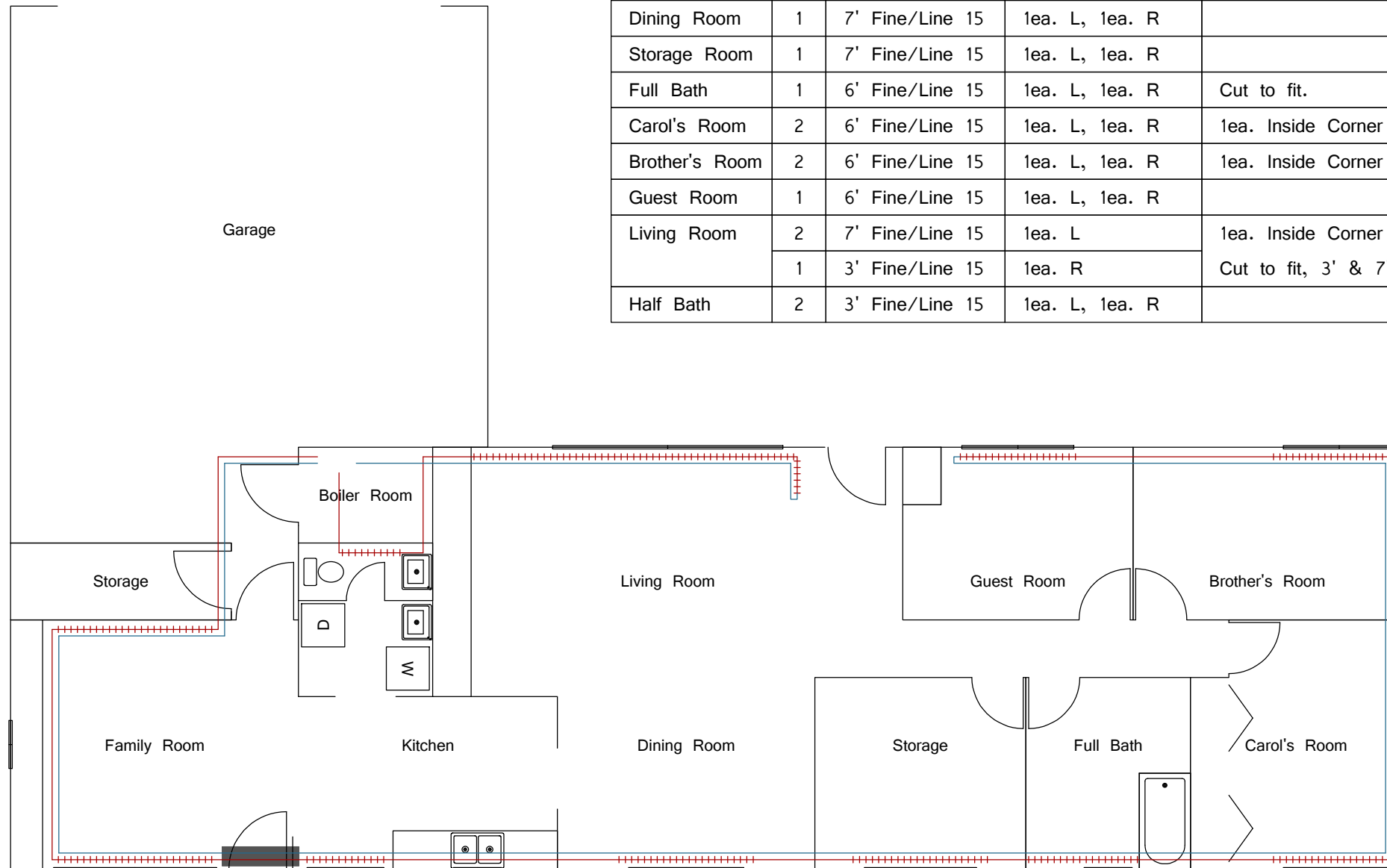


## Baseboard Schedule

<i>Location</i>	<i>Qt.</i>	<i>Size / Type</i>	<i>Endcaps</i>	<i>Notes</i>
Family Room	2	8' Fine/Line 15	2ea. L, 2ea. R	Toekick route
Kitchen	1	4' Fine/Line 15	1ea. L, 1ea. R	
Dining Room	1	7' Fine/Line 15	1ea. L, 1ea. R	
Storage Room	1	7' Fine/Line 15	1ea. L, 1ea. R	
Full Bath	1	6' Fine/Line 15	1ea. L, 1ea. R	Cut to fit.
Carol's Room	2	6' Fine/Line 15	1ea. L, 1ea. R	1ea. Inside Corner
Brother's Room	2	6' Fine/Line 15	1ea. L, 1ea. R	1ea. Inside Corner
Guest Room	1	6' Fine/Line 15	1ea. L, 1ea. R	
Living Room	2	7' Fine/Line 15	1ea. L	1ea. Inside Corner
	1	3' Fine/Line 15	1ea. R	Cut to fit, 3' & 7'
Half Bath	2	3' Fine/Line 15	1ea. L, 1ea. R	



## Bill of Materials: Baseboard

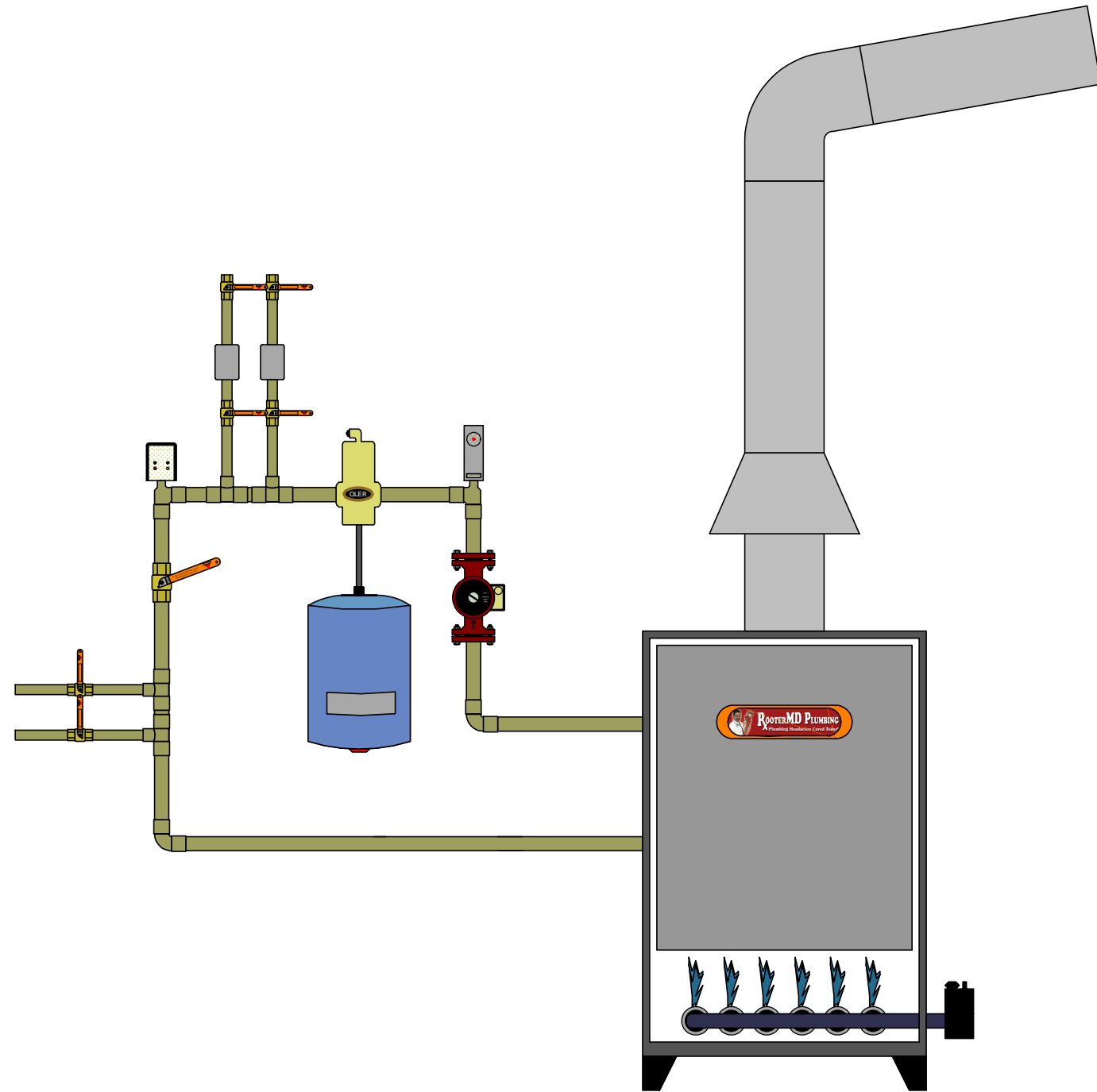
<i>Qt.</i>	<i>Description</i>	<i>Notes</i>
2	8' SlantFin, Fine/Line 15	
4	7' SlantFin, Fine/Line 15	
6	6' SlantFin, Fine/Line 15	
1	4' SlantFin, Fine/Line 15	
3	3' SlantFin, Fine/Line 15	
11	SlantFin, Hinged End Cap, No. 15-LESH-LEFT	
11	SlantFin, Hinged End Cap, No. 15-RESH-RIGHT	
3	SlantFin, Inside Corner, No. 15-IC-90-90 Degrees	
2	180 Degree Vented	
2	Coin Vent, 1/8" IP	
300'	3/4" Copper Tubing, Type M	
10'	3/4" Copper Tubing, Type K	
34	3/4" C x C Coupling	
40	3/4" C x C 90	
12	3/4" C x C 45	
12	7/8" Insulator	
120	Drywall Screws, 1.5"	
100	Fender Washers, 1/8"	
20	Two-hole-strap, Nylon, Full Circumference Wrap	
20	Two-hole-strap, Nylon, Mickey Mouse (ish)	
2#	Solder	
2	Heat Shield	
1	Flux, Oatly No. 5	
1	Sand Cloth, Open Mesh, Box	
4	3/4" Wire Brush	
1	Hole Saw, 1 3/8"	

*James Leroy Oler*  
*Eye of the Sparrow Dr.*  
*Farmington, Michigan 48335*



Hot Water Baseboard Radiation

1 of 4



## Bill of Materials: Boiler

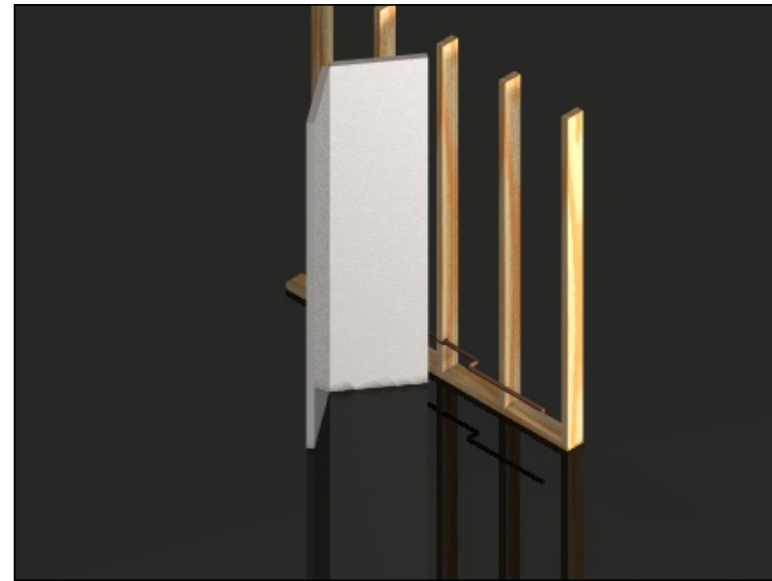
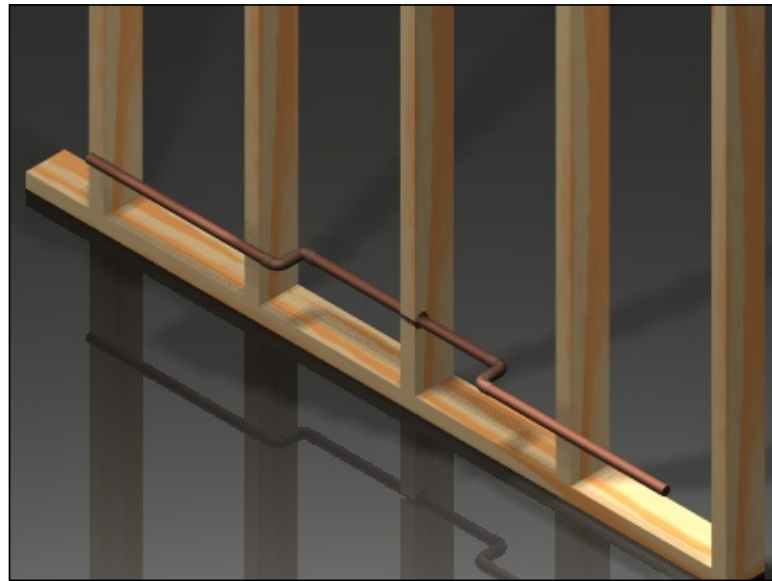
<i>Qt.</i>	<i>Description</i>	<i>Notes</i>
1	Amtrol, Filltrol 110	
2	Zone Valve, Honeywell V8043F 5000 Series	
1	Spirovent Junior Microbubble Eliminator, 125TM	
1	Low Water Cut-off, Gaurd Dog RB-24E	
1	Honeywell L4006E1117, High Limit; Manual Reset Aquastat	
1	Grundfos, Alfa 15-55F/LC, Circulation Pump	
6	3/4" C x C Ball-valve	
1	1 1/4" C x C Ball-valve	
1	1/2 x 3 Brass Nipple	
6	1 1/4" MIP x C Adpt.	
2	1 1/2" x 1 1/4" Galvanized Bushing	
2	1 1/4" x 3/4" x 1 1/4" C x C x C Tee	
2	3/4" FIP x C Fit-in Adpt.	
4	1 1/4" x 3/4" C x C x C Tee	
6	1 1/4" C x C 90	
1	1 1/4" IP Isolation Flanges, Set (2)	
10'	11/16" Unistrut	
8	3/4" CT Unistrut Clamps	
6	1 1/4" CT Unistrut Clamps	
10'	1 1/4" Copper Tubing, Type L	
1#	Solder	
2	1/2" Thread Tape	
1	1/2" or 3/4" RPZ, Whichever is less \$.	
1	Thermostat Wire, 250', 18Ga., 5 Wire	
2	Thermostats, White, Round, Honeywell	
100	Insulated Wire Staples	

James Leroy Oler  
 Eye of the Sparrow Dr.  
 Farmington, Michigan 48335

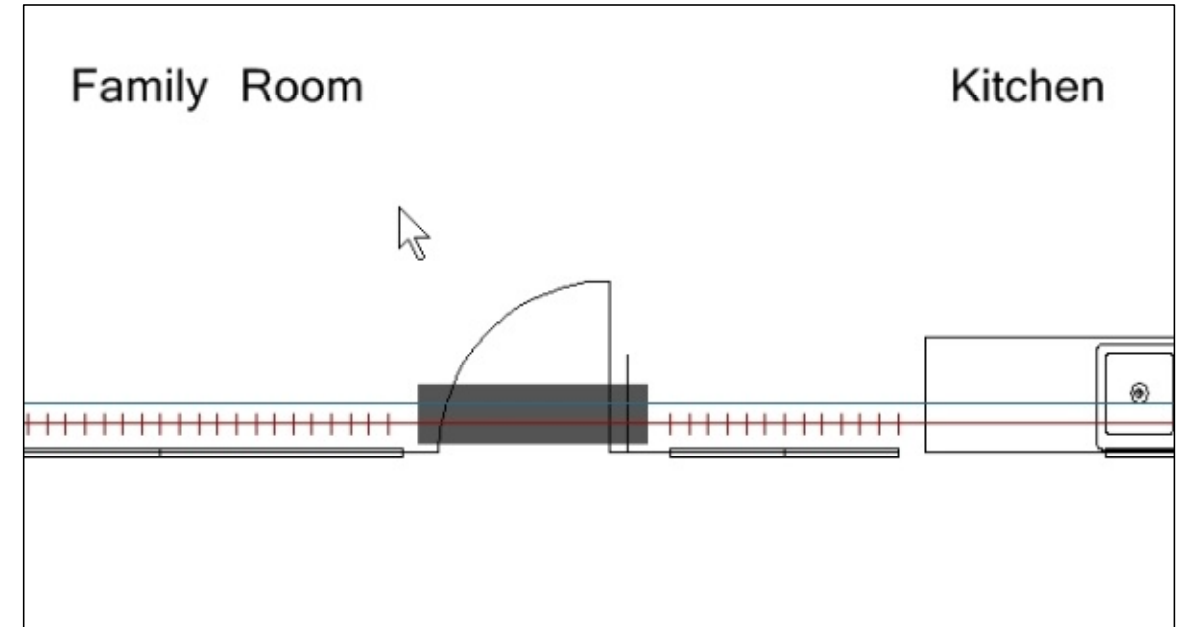
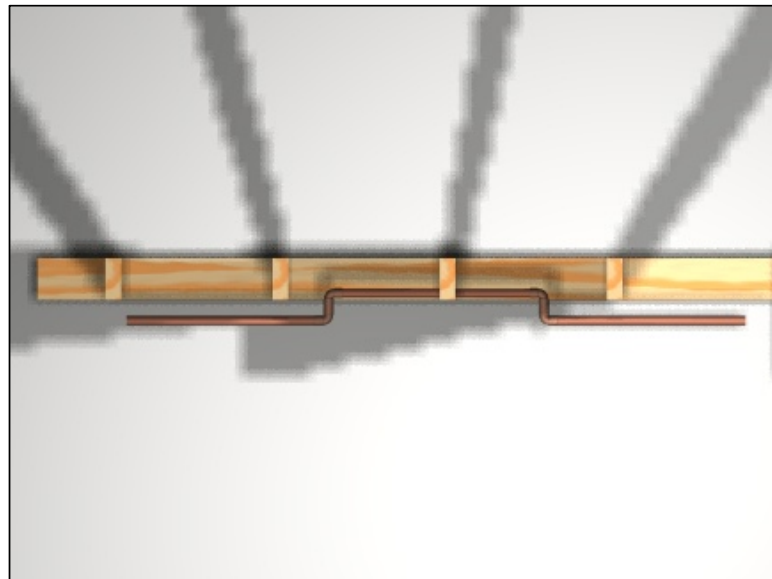


Boiler Design

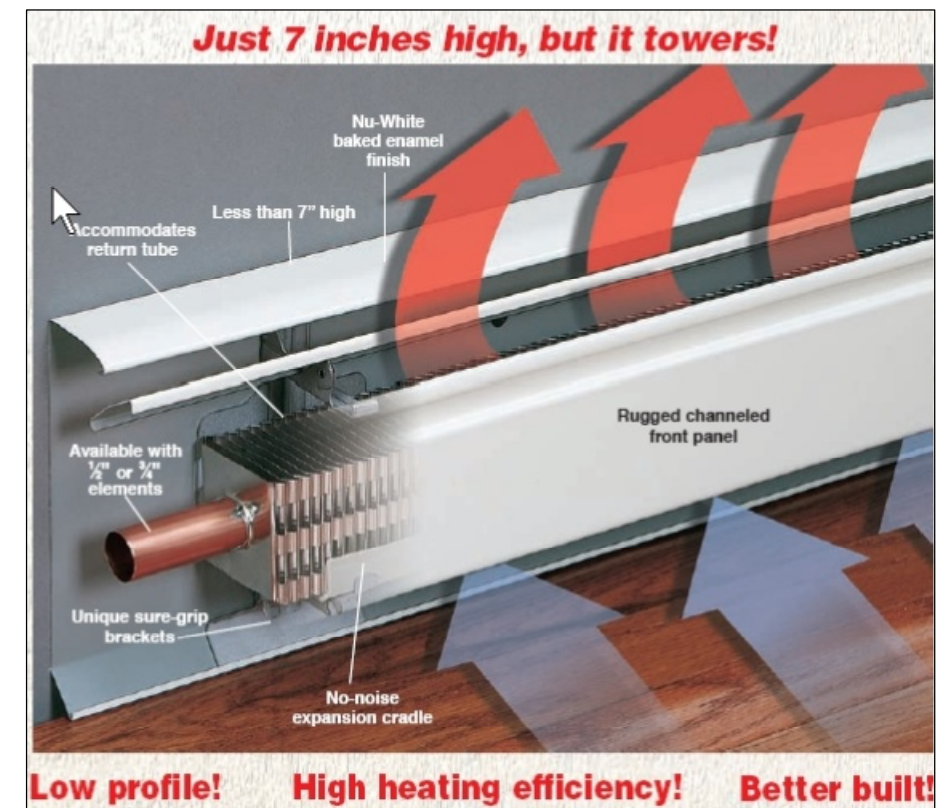
2 of 4



Objective: Route the 3/4" copper tubing into the wall so that the closet door can continue to function normally. This installation method is to be used in the bedrooms where applicable. Cut a larger hole in the closet, drill through the stud and exit the wall close to the next stud through a hole that the baseboard will cover. Be certain to stay to the inside edge of the stud. Note: the feed-line is not pictured. It will be routed just below the return-line in the same manner.



Objective: Route the feed and return lines under the slab.



*James Leroy Oler  
 Eye of the Sparrow Dr.  
 Farmington, Michigan 48335*



Pictures

4 of 4